

FOR LEASE

Retail For Lease in Gramercy

310 E 23rd Street | New York, NY

Between First & Second Avenue



2,114 SF
Ground Floor

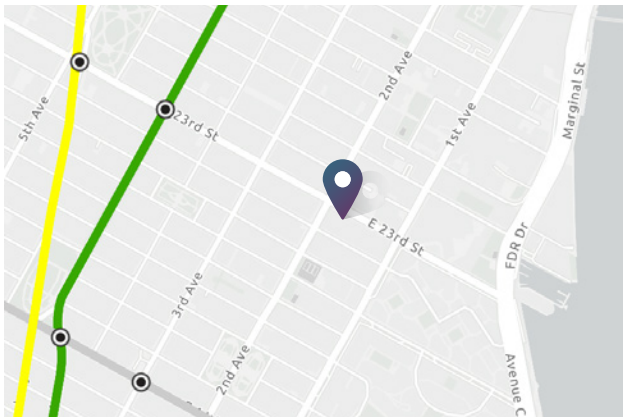
Immediate
Possession

15'
Frontage

10'
Ceiling Height

COMMENTS

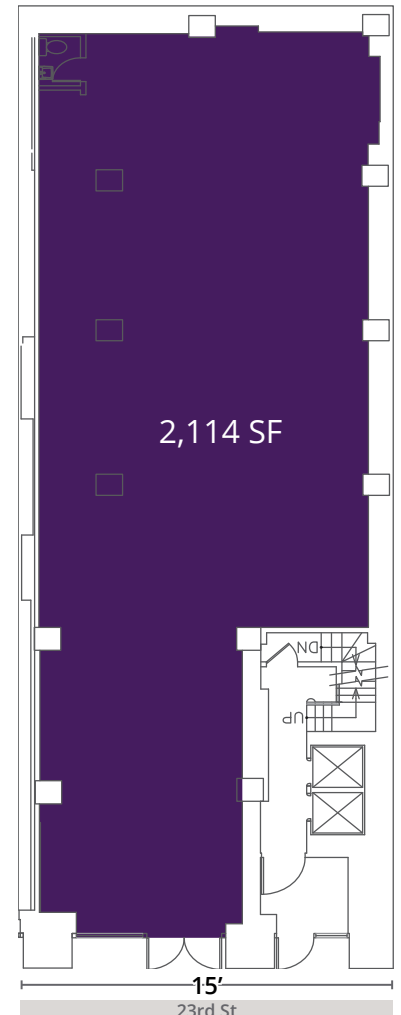
- Space is not divisible
- Non-venting food uses accepted
- Direct long-term deal with Landlord



CONTACT

Brian von Schmid
212.710.5259 | brian.vonschmid@srsre.com

NEARBY RETAILERS



310 E 23rd Street



Placer.ai Visits on E 23rd Street (Second Ave to First Ave) [Pre-covid]

- Week ending March 15, 2020: 14,843
- Week ending March 8, 2020: 13,568
- Week ending March 1, 2020: 14,511

Powered by anonymous geolocation data from more than 30M mobile devices, Placer.ai pinpoints customers as they move to provide insight for retailers and businesses.

