

FOR LEASE
45 Wall Street
 New York, NY



Overview

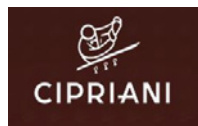
SIZE	2,952 SF
ASKING RENT	Upon Request
FRONTAGE	34' 6"
POSSESSION	Arranged
NEIGHBORING TENANTS	



DEAN & DELUCA.
 sweetgreen



TIFFANY & CO.

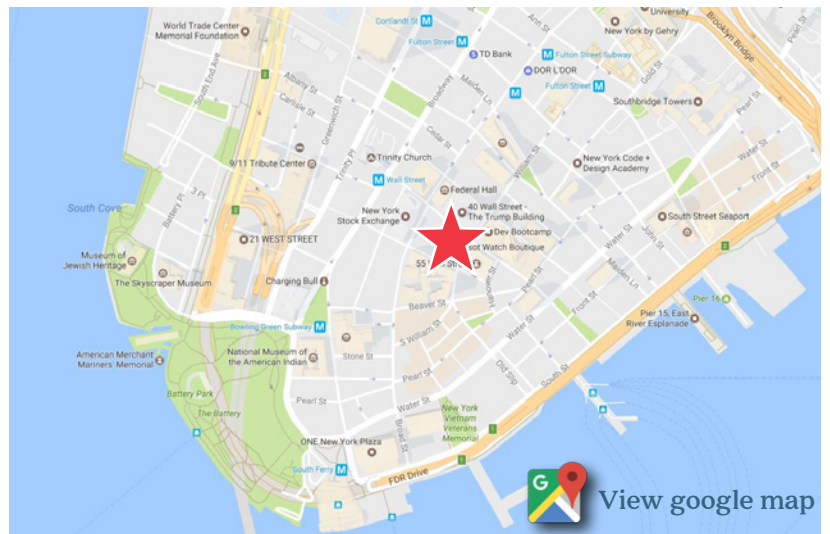


Contact

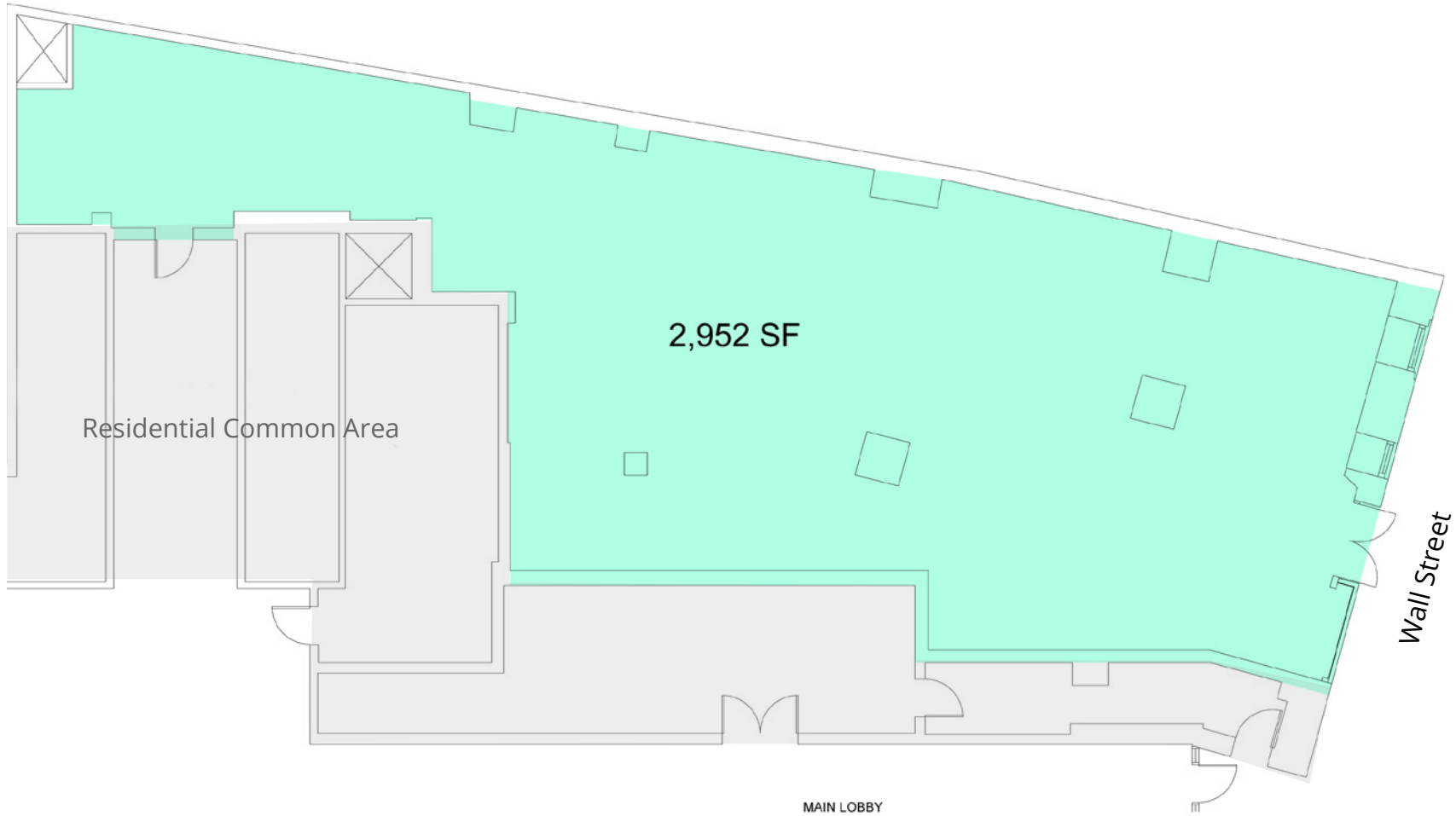
BRIAN VON SCHMID
 212.710.5259 | brian.vonschmid@srsre.com

Description

- All non-venting uses considered
- On block of two subway line entrances **2 3** and **J Z**
- Easy access to **4 5 1 R W A C E**
- 300,000 daily commuters
- 14.2 million annual tourists to the area
- 88 million SF of usable office space in Lower Manhattan



View google map



FOR LEASE
45 Wall Street

